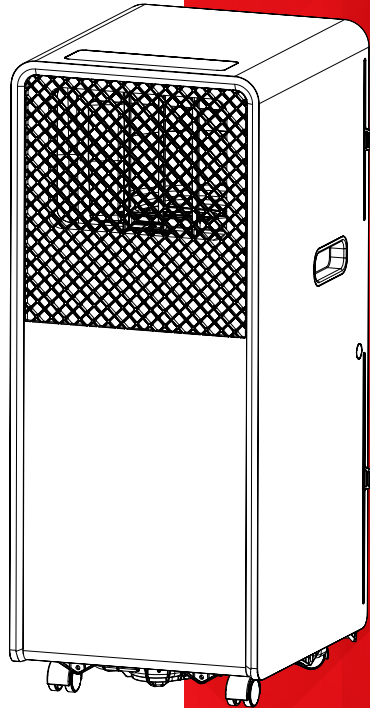




INSTRUCTION MANUAL



ECOIQ Portable Air Conditioner and Dehumidifier

Model: DXPAC002



For domestic household use only.



This product complies with all the required European and UK Product Safety, Electromagnetic Compatibility and Environmental Standards. They are fully compliant with the LVD, EMC, RoHS and Eco Design Directives and Regulations.

IMPORTANT SAFETY ADVICE



IMPORTANT: THESE INSTRUCTIONS SHOULD BE READ CAREFULLY BEFORE USE AND RETAINED FOR FUTURE REFERENCE

Personal Injury, Fire, Electric Shock, and Child Safety Risks

WARNING: To avoid danger of suffocation please remove all packaging materials particularly plastic and EPS and keep these away from vulnerable people, children and babies.

WARNING: To avoid the risk of accidental strangulation from the supply cord all children and vulnerable people must be supervised when in the vicinity of the product whether it is working or not.

WARNING: To reduce the risk of electric shock, fire, or personal injury, always switched off and disconnect the appliance from the power supply before relocating, servicing, or cleaning.

WARNING: To reduce risk of fire or electric shock, do not use this portable air conditioner with any solid-state speed control device.

WARNING: Keep the cord out of heavy traffic areas to avoid fire hazard.

Electrical Safety and Intended Use

IMPORTANT: To reduce the risk of electric shock, the plug is intended to fit in a standard polarized 13-Amp socket outlet, only plug the appliance directly into a proper electrical outlet.

Operate the appliance only at the voltage specified on the rating label.

IMPORTANT: If the supply cord of this appliance is damaged, it must be replaced by the manufacturer, its service agent or similarly qualified person to avoid a hazard.

IMPORTANT: Use the appliances only for intended household use as described in this manual. Any other use not recommended by the manufacturer may cause fire, electric shock or injury to persons.

NOTE: This product is supplied with a remote control powered by AAA batteries. Ensure batteries are installed with the correct polarity (+/-) as indicated. Do not mix old and new batteries or different battery types. Remove the batteries if the remote will not be used for an extended period to prevent leakage or damage.

Child Use and Supervision Requirements

This appliance can be used by children aged from 8 years and above and persons with reduced physical, sensory or mental capabilities or lack of experience or knowledge if they have been given supervision or instruction concerning the use of the appliance in a safe way and understand the hazards involved.

Children shall not play with the appliance.

Cleaning and user maintenance shall not be made by children without supervision.

Children of less than 3 years should be kept away unless continuously supervised.

Children aged from 3 years, and less than 8 years shall only switch on/off the appliance if it has been placed or installed in its intended normal operating position, and they have been given supervision or instruction concerning the use of the appliance in a safe way and understand the hazards involved.

Children aged from 3 years, and less than 8 years shall not plug in, regulate and clean the appliance or perform user maintenance.

Electrical Hazards and Improper Use

DO NOT pull, carry or move the appliance using the power cable.

DO NOT use extension cords or multi-socket adapters, as these may overheat and pose a fire hazard.

DO NOT use this appliance connected through an extension lead or any external switching device such as a plug-in timer or remote-control plug-in adaptor.

DO NOT operate this appliance on the same circuit as other high-wattage devices.

DO NOT operate any appliance with a damaged cord or plug, if motor fan fails to rotate, after the appliance malfunctions, or it has been dropped or damaged in any manner. Contact Customer Care Centre for assistance.

DO NOT attempt to repair or adjust any electrical or mechanical functions on this unit. Doing so will void your guarantee. The inside of the unit contains no user serviceable parts. All servicing should be performed by qualified personnel only.

DO NOT cover cord with carpeting, throw rugs, runners, or similar coverings and **DO NOT** route cord under furniture or appliances.

DO NOT immerse in water or other liquids or use near water to protect against electrical hazards.

Operational Hazards and Misuse

DO NOT cover or obstruct the air inlet and outlet openings in any way.

DO NOT place anything on top of unit.

DO NOT use for drying textiles. This appliance is not intended for drying clothes or other fabric items.

DO NOT use the appliance near petrol, paints, flammable gases, or vapours.

DO NOT use this appliance in areas where humidity, steam, or condensation are present, such as laundry rooms, enclosed bathrooms, or near bathtubs, showers, or swimming pools.

DO NOT use outdoors.

This product is only intended for **INDOOR RESIDENTIAL** applications.

This product should not be used for commercial or industrial or leisure applications or in small, enclosed spaces.

DO NOT use any abrasive cleaners or solvents, as this will damage the appliance.

Safe Operation and Placement

This appliance must be stored and transported in an upright position only. If the unit has been tilted or its orientation during transport is uncertain, allow it to stand upright for at least 24 hours before operating. Failure to do so may result in damage to the compressor or reduced performance.

This portable air conditioner is fitted with a compressor delay protection circuit. This protects the unit from possible damage due to rapid starting and stopping of its compressor. The compressor will begin operation 3 minutes after the unit has been switched ON or if the mode is changed from dehumidify to cooling.

Operate this unit only on a firm, flat surface to avoid the risk of water leakage. Ensure that the unit is always kept upright.

DO NOT place on soft, unstable or non-horizontal/angled surfaces.

ENSURE a minimum clearance of 50 cm is maintained on all sides of the appliance to allow for adequate airflow and safe operation.

DO NOT use the unit near windows or where water collects. Rain and water collection may lead to a risk of fire or electric shock.

Avoid electromagnetic interference. Keep the unit at least 1 metre away from electrical appliances such as televisions & radios.

NEVER drop or insert objects into any openings.

During use, keep curtains, loose fabrics, and other objects away from the air inlet and outlet to prevent obstruction or accidental intake by the fan mechanism.

NEVER put the cord near heat sources such as a radiators, stoves, or heaters.

Cord and Plug Handling

The socket-outlet must always be accessible to enable the mains plug to be disconnected as quickly as possible.

Be sure to pull by the plug and not the cord when un-plugging the appliance.

The supply cord should be uncoiled before use.

This instruction leaflet belongs to the appliance and must be kept in a safe place. If changing owners, the leaflet must be surrendered to the new owner.

WARNING



R290



WARNING: FOR USING R290 REFRIGERANT. THIS SYMBOL SHOWS THAT THIS APPLIANCE USES A FLAMMABLE REFRIGERANT. IF THE REFRIGERANT IS LEAKED AND EXPOSED TO AN EXTERNAL IGNITION SOURCE, THERE IS A RISK OF FIRE.

CAUTION: RISK OF FIRE/FLAMMABLE MATERIALS. THE APPLIANCE MUST BE INSTALLED, USED & STORED IN AN AREA THAT IS GREATER THAN 15M².

NB: These symbols on your device mean:

This appliance is filled with Propane gas R290. Follow strictly the manufacturer's instruction concerning use and repairs!

This appliance contains a small quantity of R290 refrigerant which is environmentally friendly, but flammable. It does not damage the ozone layer, nor does it increase the greenhouse effect.

Servicing of this appliance must only be carried out by a qualified and authorised service technician. For models using hydrocarbon refrigerants, any servicing or repair of the refrigerant circuit must be performed exclusively by personnel certified to handle flammable refrigerants, in accordance with applicable UK and EU regulations.

Repairs must be performed based on the recommendations from the manufacturing company.

Do not use mechanical devices or other means to accelerate the defrosting process or to clean the appliance, unless specifically recommended by the manufacturer. Improper methods may damage the refrigerant circuit or create a fire hazard.

The appliance shall NOT be stored in a room with continuously operating ignition sources (for example: open flames, an operating gas appliance or an operating electric heater).

Do not pierce or burn.

Be aware that the refrigerants may not contain an odour.

The appliance should be installed, operated and stored in a room with a floor area according to the amount of refrigerant to be charged. For specific information on the type of gas and the amount, please refer to the relevant label on the unit itself. When there are differences between the label and the manual on the Min. room area description, the description on label shall prevail.

Compliance with national gas regulations shall be observed.

Keep ventilation openings clear of obstruction.

The appliance shall be stored to prevent mechanical damage from occurring.

A warning that the appliance shall be stored in a well-ventilated area where the room size corresponds to the room area as specified for operation.

Any person who is involved with working on or breaking into a refrigerant circuit should hold a current valid certificate from an industry-accredited assessment authority, which authorises their competence to handle refrigerants safely in accordance with an industry recognised assessment specification.

This appliance can be connected only to a supply with system impedance no more than 0.384Ω . In case necessary, please consult your supply authority for system independence information.

Servicing shall only be performed as recommended by the equipment manufacturer. Maintenance and repair requiring the assistance of other skilled personnel shall be carried out under the supervision of the person competent in the use of flammable refrigerants.

Please follow the instruction carefully to handle, install, clear, service the air conditioner to avoid any damage or hazard. When maintaining or disposing the air conditioner, the refrigerant (R290) shall be recovered properly, shall not discharge to air directly.

1. No open fire or device like switch which may generate sparking shall be around the air conditioner to avoid causing ignition of the flammable refrigerant used.

2. Transport of equipment containing flammable refrigerants - see transport regulations.

3. Marking of equipment using signs - see local regulations.
4. Disposal of equipment using flammable refrigerants - see national regulations.
5. Storage of equipment/appliances - The storage of equipment should be in accordance with the manufacturer's instructions.
6. Storage of packed (unsold) equipment - storage package protection should be constructed such that mechanical damage to the equipment inside the package will not cause a leak of the refrigerant. The maximum number of pieces of equipment permitted to be stored together will be determined by local regulations.

INFORMATION ON SERVICING

Checks to the area – Prior to beginning work on systems containing flammable refrigerants, safety checks are necessary to ensure that the risk of ignition is minimised. For repair to the refrigerating system, the following precautions shall be complied with prior to conducting work on the system.

Work procedure – Work shall be undertaken under a controlled procedure to minimise the risk of a flammable gas or vapour being present while the work is being performed.

General work area – All maintenance staff and others working in the local area shall be instructed on the nature of work being carried out. Work in confined spaces shall be avoided. The area around the workspace shall be sectioned off. Ensure that the conditions within the area have been made safe by control of flammable material.

Checking for presence of refrigerant – The area shall be checked with an appropriate refrigerant detector prior to and during work, to ensure the technician is aware of potentially flammable atmospheres. Ensure that the leak detection equipment being used is suitable for use with flammable refrigerants, i.e. non-sparking, adequately sealed or intrinsically safe.

Presence of fire extinguisher – If any hot work is to be conducted on the refrigeration equipment or any associated parts, appropriate fire extinguishing equipment shall be available to hand. Have a dry powder or CO₂ fire extinguisher adjacent to the charging area.

No ignition sources – No person carrying out work in relation to a refrigeration system which involves exposing any pipe work that contains or has contained flammable refrigerant shall use any sources of ignition in such a manner that it may lead to the risk of fire or explosion. All possible ignition sources, including cigarette smoking, should be kept sufficiently far away from the site of installation, repairing, removing and disposal, during which flammable refrigerant can possibly be released to the surrounding space. Prior to work taking place, the area around the equipment is to be surveyed to make sure that there are no flammable hazards or ignition risks. No Smoking signs shall be displayed.

Ventilated area – Ensure that the area is in the open or that it is adequately ventilated before breaking into the system or conducting any hot work. A degree of ventilation shall continue during the period that the work is carried out. The ventilation should safely disperse any released refrigerant and preferably expel it externally into the atmosphere.

CHECKS TO THE REFRIGERATION EQUIPMENT

Where electrical components are being changed, they shall be fit for the purpose and to the correct specification. At all times the manufacturer's maintenance and service guidelines shall be followed. If in doubt consult the manufacturer's technical department for assistance. The following checks shall be applied to installations using flammable refrigerants:

- 1 The charge size is in accordance with the room size within which the refrigerant containing parts are installed.
- 2 The ventilation machinery and outlets are operating adequately and are not obstructed.
- 3 If an indirect refrigerating circuit is being used, the secondary circuit shall be checked for the presence of refrigerant.
- 4 Marking to the equipment continues to be visible and legible. Markings and signs that are illegible shall be corrected.
- 5 Refrigeration pipe or components are installed in a position where they are unlikely to be exposed to any substance which may corrode refrigerant containing components, unless the components are constructed of materials which are inherently resistant to being corroded or are suitably protected against being so corroded.

CHECKS TO ELECTRICAL DEVICES

Repair and maintenance to electrical components shall include initial safety checks and component inspection procedures. If a fault exists that could compromise safety, then no electrical supply shall be connected to the circuit until it is satisfactorily dealt with. If the fault cannot be corrected immediately but it is necessary to continue operation, an adequate temporary solution shall be used. This shall be reported to the owner of the equipment, so all parties are advised.

Initial safety checks shall include:

- 1 That capacitors are discharged: this shall be done in a safe manner to avoid possibility of sparking.
- 2 That there no live electrical components and wiring are exposed while charging, recovering or purging the system; That there is continuity of earth bonding.

REPAIRS TO SEALED COMPONENTS

During repairs to sealed components, all electrical supplies shall be disconnected from the equipment being worked upon prior to any removal of sealed covers, etc. If it is necessary to have an electrical supply to equipment during servicing, then a permanently operating form of leak detection shall be located at the most critical point to warn of a potentially hazardous situation.

Particular attention shall be paid to the following to ensure that by working on electrical components, the casing is not altered in such a way that the level of protection is affected. This shall include damage to cables, excessive number of connections, terminals not made to original specification, damage to seals, incorrect fitting of glands, etc. Ensure that apparatus is mounted securely. Ensure that seals or sealing materials have not degraded such that they no longer serve the purpose of preventing the ingress of flammable atmospheres. Replacement parts shall be in accordance with the manufacturer's specifications.

NOTE: The use of silicon sealant may inhibit the effectiveness of some types of leak detection equipment. Intrinsically safe components do not have to be isolated prior to working on them.

REPAIR TO INTRINSICALLY SAFE COMPONENTS

Do not apply any permanent inductive or capacitance loads to the circuit without ensuring that this will not exceed the permissible voltage and current permitted for the equipment in use. Intrinsically safe components are the only types that can be worked on while live in the presence of a flammable atmosphere. The test apparatus shall be at the correct rating. Replace components only with parts specified by the manufacturer. Other parts may result in the ignition of refrigerant in the atmosphere from a leak.

CABLING

Check that cabling will not be subject to wear, corrosion, excessive pressure, vibration, sharp edges or any other adverse environmental effects. The check shall also consider the effects of aging or continual vibration from sources such as compressors or fans.

DETECTION OF FLAMMABLE REFRIGERANTS

Under no circumstances shall potential sources of ignition be used in the searching for or detection of refrigerant leaks. A halide torch (or any other detector using a naked flame) shall not be used.

LEAK DETECTION METHODS

The following leak detection methods are deemed acceptable for systems containing flammable refrigerants. Electronic leak detectors shall be used to detect flammable refrigerants, but the sensitivity may not be adequate or may need re-calibration. (Detection equipment shall be calibrated in a refrigerant-free area.) Ensure that the detector is not a potential source of ignition and is suitable for the refrigerant used. Leak detection equipment shall be set at a percentage of the LFL of the refrigerant and shall be calibrated to the refrigerant employed and the appropriate percentage of gas (25 % maximum) is confirmed. Leak detection fluids are suitable for use with most refrigerants but the use of detergents containing chlorine shall be avoided as the chlorine may react with the refrigerant and corrode the copper pipework. If a leak is suspected, all naked flames shall be removed/ extinguished. If a leakage of refrigerant is found which requires brazing,

all the refrigerants shall be recovered from the system, or isolated (by means of shut off valves) in a part of the system remote from the leak. Oxygen free nitrogen (OFN) shall then be purged through the system both before and during the brazing process.

REMOVAL AND EVACUATION

When breaking into the refrigerant circuit to make repairs or for any other purpose conventional procedures shall be used. However, it is important that best practice is followed since flammability is a consideration. The following procedure shall be adhered to:

1. Remove refrigerant
2. Purge the circuit with inert gas
3. Evacuate
4. Purge again with inert gas
5. Open the circuit by cutting or brazing

The refrigerant charge shall be recovered into the correct recovery cylinders. The system shall be flushed with OFN to render the unit safe. This process may need to be repeated several times. Compressed air or oxygen shall not be used for this task. Flushing shall be achieved by breaking the vacuum in the system with OFN and continuing to fill until the working pressure is achieved, then venting to atmosphere, and finally pulling down to a vacuum. This process shall be repeated until no refrigerant is within the system. When the final OFN charge is used, the system shall be vented down to atmospheric pressure to enable work to take place. This operation is vital if brazing operations on the pipework are to take place. Ensure that the outlet for the vacuum pump is not close to any ignition sources and there is ventilation available.

CHARGING PROCEDURES

In addition to conventional charging procedures, the following requirements shall be followed. Ensure that contamination of different refrigerants does not occur when using charging equipment. Hoses or lines shall be as short as possible to minimise the amount of refrigerant contained in them. Cylinders shall be kept upright. Ensure that the refrigeration system is earthed prior to charging the system with refrigerant.

Label the system when charging is complete (if not already). Extreme care shall be taken not to overfill the refrigeration system. Prior to recharging the system, it shall be pressure tested with OFN. The system shall be leak tested on completion of charging but prior to commissioning. A follow up leak test shall be carried out prior to leaving the site.

DECOMMISSIONING

Before carrying out this procedure, it is essential that the technician is completely familiar with the equipment and all its detail. It is recommended good practice that all refrigerants are recovered safely. Prior to the task being carried out, an oil and refrigerant sample shall be taken in case analysis is required prior to re-use of reclaimed refrigerant. It is essential that electrical power is available before the task is commenced.

1. Become familiar with the equipment and its operation.
2. Isolate system electrically.
3. Before attempting the procedure ensure that:
 - a. Mechanical handling equipment is available, if required, for handling refrigerant cylinders.
 - b. All personal protective equipment is available and being used correctly.
 - c. The recovery process is always supervised by a competent person.
 - d. Recovery equipment and cylinders conform to the appropriate standards.
4. Pump down refrigerant system, if possible.
5. If a vacuum is not possible, make a manifold so that refrigerant can be removed from various parts of the system.
6. Make sure that cylinder is situated on the scales before recovery takes place.
7. Start the recovery machine and operate in accordance with manufacturer's instructions.
8. Do not overfill cylinders. (No more than 80 % volume liquid charge).
9. Do not exceed the maximum working pressure of the cylinder, even temporarily.
10. When the cylinders have been filled correctly and the process completed, make sure that the cylinders and the equipment are removed from site promptly and all isolation valves on the equipment are closed off.
11. Recovered refrigerant shall not be charged into another refrigeration system unless it has been cleaned and checked.

LABELLING

Equipment shall be labelled stating that it has been de-commissioned and emptied of refrigerant. The label shall be dated and signed. Ensure that there are labels on the equipment stating the equipment contains flammable refrigerant.

RECOVERY

When removing refrigerant from a system, either for servicing or decommissioning, it is recommended good practice that all refrigerants are removed safely. When transferring refrigerant into cylinders, ensure that only appropriate refrigerant recovery cylinders are employed. Ensure that the correct number of cylinders for holding the total system charge is available. All cylinders to be used are designated for the recovered refrigerant and labelled for that refrigerant (i.e. special cylinders for the recovery of refrigerant). Cylinders shall be complete with pressure relief valve and associated shut-off valves in good working order. Empty recovery cylinders are evacuated and, if possible, cooled before recovery occurs. The recovery equipment shall be in good working order with a set of instructions concerning the equipment that is at hand and shall be suitable for the recovery of flammable refrigerants. In addition, a set of calibrated weighing scales shall be available and in good working order. Hoses shall be complete with leak-free disconnect couplings and in good condition. Before using the recovery machine, check that it is in satisfactory working order, has been properly maintained and that any associated electrical components are sealed to prevent ignition in the event of a refrigerant release. Consult manufacturer if in doubt. The recovered refrigerant shall be returned to the refrigerant supplier in the correct recovery cylinder, and the relevant Waste Transfer Note arranged. Do not mix refrigerants in recovery units and especially not in cylinders. If compressors or compressor oils are to be removed, ensure that they have been evacuated to an acceptable level to make certain that flammable refrigerant does not remain within the lubricant. The evacuation process shall be carried out prior to returning the compressor to the suppliers. Only electric heating to the compressor body shall be employed to accelerate this process. When oil is drained from a system, it shall be carried out safely.



Exposed to the weather outdoors



Near water



If the power cable wires are frayed or cut



Where small children may be left unattended



No extension leads or power boards



Where the power cable may be damaged



On a slope or uneven surface



Where there is risk of fire or close to a naked flame



Where it may be damaged by chemicals



Where there is a risk of interference by foreign objects



This product is not made for DIY repair



If there is a risk of water falling on the unit

ELECTRICAL CONNECTION

WARNING: This appliance must be earthed.

If the socket outlets in your home are not of the 13-amp BS1363 type they will not accept the plug connected to this portable air conditioner, therefore cut off the plug. When cut off this plug can constitute a shock hazard if inserted into a socket outlet. It must therefore be disposed of safely.

IMPORTANT: The wires in this mains lead are coloured in accordance with the following code:

BLUE: NEUTRAL

BROWN: LIVE

GREEN & YELLOW: EARTH

As the colours of the wires in the mains lead may not correspond with the coloured markings in your plug, proceed as follows:

Connect the BROWN wire to the terminal marked 'L' or coloured RED. Connect the BLUE wire to the terminal marked 'N' or coloured BLACK. Note: 'L' or 'N' must not be connected to the EARTH terminal marked 'E' or '⏚' or coloured GREEN or GREEN AND YELLOW. If in doubt, consult your electrician.

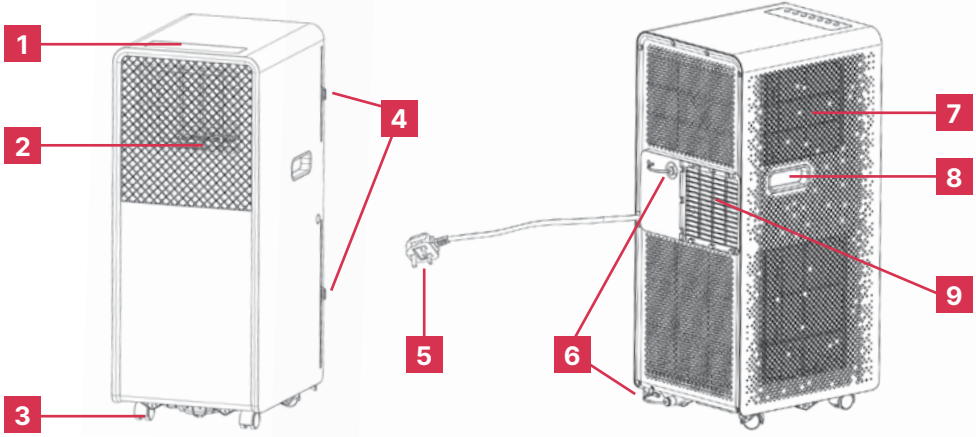
SPECIFICATION

Colour	Arctic White and Anthracite
Power supply	220-240V~, 50Hz
Operating temperature	18-35°C
Thermostat range	16-31°C
Cooling Capacity	3.5kW / 12,000 BTU
Dehumidification Capacity	1.7L/H
Wi-Fi	Yes (Glen Dimplex Connect**)
Noise Level	≤65dB(A)
Refrigerant	R290
Fan speeds	2
Remote	Yes
Timer	0 - 24 hours
Weight (net)	23.4kg

For greater precision, please always refer to the rating label placed on the product.

****Note:** Wi-Fi requires the Glen Dimplex Connect app to be installed on your smart device. Search for 'Glen Dimplex Connect' in the Apple App Store or Google Play Store.

PRODUCT PARTS

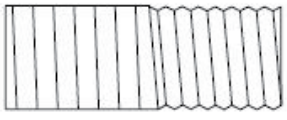


- 1 Control Panel
- 2 Adjustable Louver
- 3 Castors

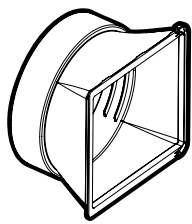
- 4 Air Filter
- 5 Power Cord
- 6 Drainage Outlet

- 7 Air Inlet
- 8 Handle
- 9 Air Outlet

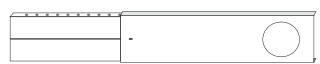
1 x Exhaust Hose



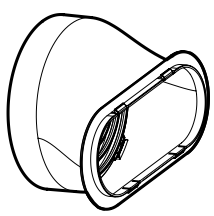
1 x Housing Adapter



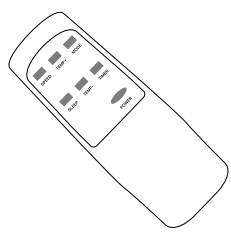
1 x Window Slider Kit



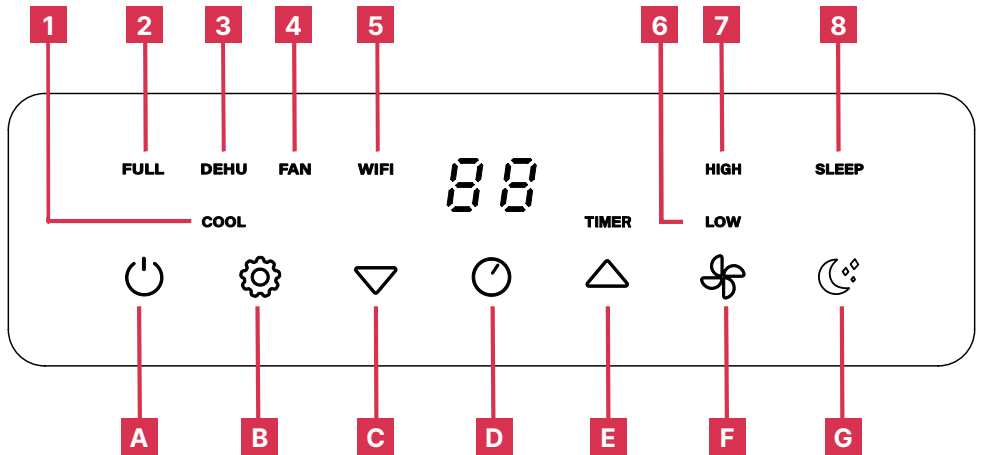
1 x Window Connector



1 x Remote Control



CONTROL PANEL



LED Indicators

1. Cooling
2. Water Full Indicator
3. Dehumidifying
4. Fan
5. Wi-Fi
6. Low Fan Speed
7. High Fan Speed
8. Sleep

Buttons

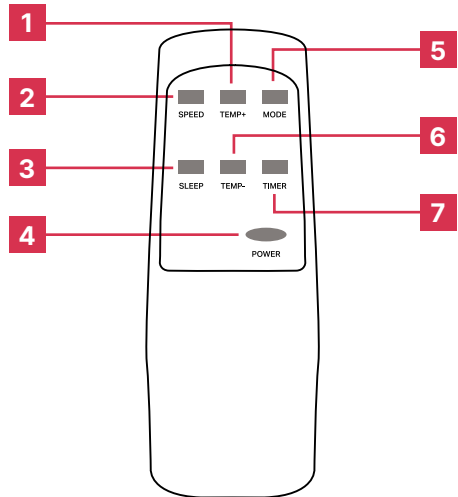
- A. Power ON/OFF
- B. Operation Mode Setting
- C. Temp Decrease (-) Button
- D. Timer ON/OFF
- E. Temp Increase (+) Button
- F. Fan Speed
- G. Sleep Mode

NOTE:

- The LED display will dim after 20 seconds of inactivity. Press anywhere on the display to wake the screen.
- The LED display indicates the current set temperature or the timer setting.
- When the set temperature or the timer is adjusted, the new setting is shown on the display.
- The LED display is also used to show error codes should a fault occur.

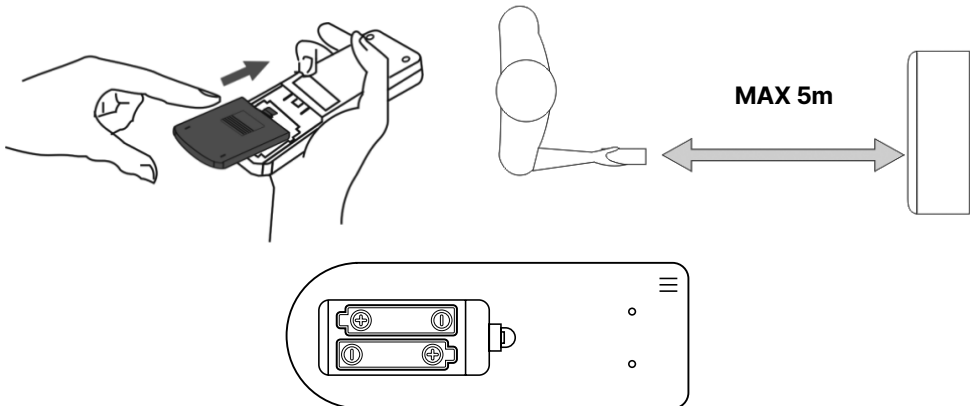
REMOTE CONTROL

1. Temp Increase (+) Button
2. Fan Speed
3. Sleep Mode
4. Power ON/OFF
5. Function Button
6. Temp Decrease (-) Button
7. Timer ON/OFF



USING THE REMOTE CONTROL

1. Open the battery cover of the remote control and insert 2 x AAA batteries.
2. Please point to the receiver and be within 5m when using the remote control.
3. If the battery voltage is low, please open the battery cover as per the diagram and replace with a new batteries (2 x AAA). Then replace the battery cover.



NOTE:

- If the remote-control unit is replaced or disposed of, the batteries must be removed and discarded in accordance with current legislation as they are harmful to the environment.
- Do not mix old and new batteries. Do not mix alkaline, standard (carbon-zinc) or rechargeable (nickel-cadmium) batteries.
- Do not dispose of batteries in fire. Batteries may explode or leak.
- If the remote control is not to be used for an extended period, remove the batteries.

INSTALLATION

EXHAUST HOSE INSTALLATION

The exhaust hose and adapter must be installed or removed in accordance with the set function. For COOL & DRY functions, the exhaust hose must be installed. For FAN only - the exhaust hose should be removed.

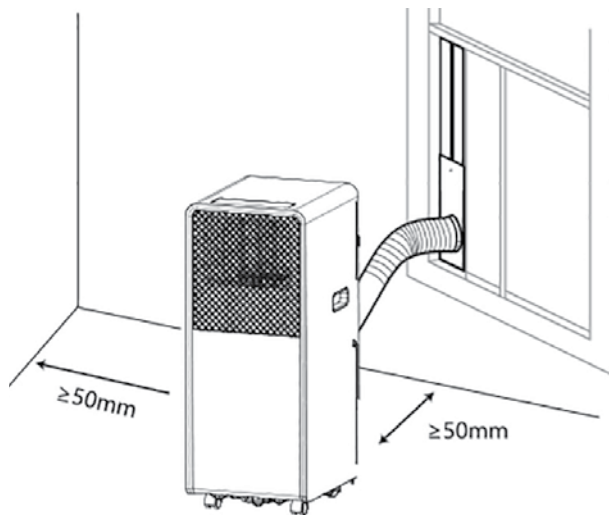
EXHAUSTING HOT AIR

In COOL function the appliance must be placed close to a window or opening so the warm exhaust air can be expelled outside.

CHOOSING THE RIGHT LOCATION

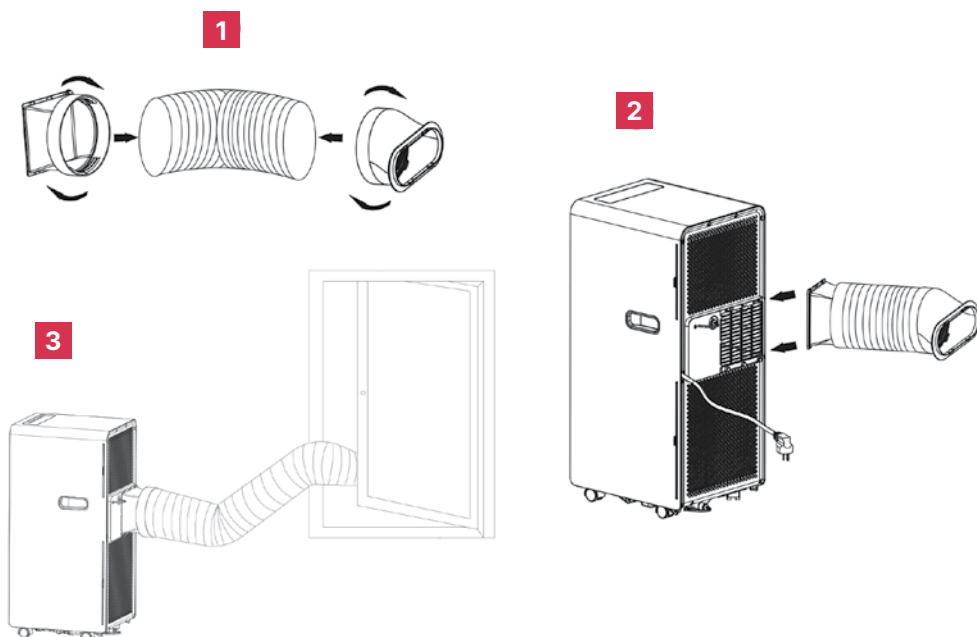
Your installation location should meet the following requirements:

- Make sure that you install your unit on an even surface to minimize noise and vibration.
- The unit must be installed near a sufficient power outlet, and if using a continuous drainage method, then the plug areas should be accessible.
- The unit should be located at least 50cm from the nearest wall to ensure proper air circulation. The horizontal louvre blade should be at least 50cm away from obstacles.
- The exhaust hose can be extended, however it's best to keep it to the minimum length required. Ensure the hose doesn't have any sharp bends, sagging areas or kinks.
- DO NOT operate the unit in a wet location, such as a laundry room.
- DO NOT cover the intakes, outlets or remote-control signal receptor of the unit.



EXHAUST HOSE INSTALLATION

1. Twist the housing adapter and the window connector to the ends of the exhaust hose.
2. Insert the fixing clip of the housing adapter into the openings at the back of the air conditioner.
3. Put the other end of the exhaust hose to the near windowsill.

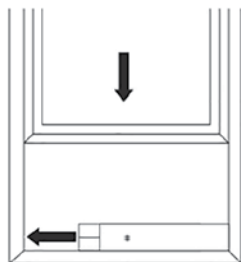
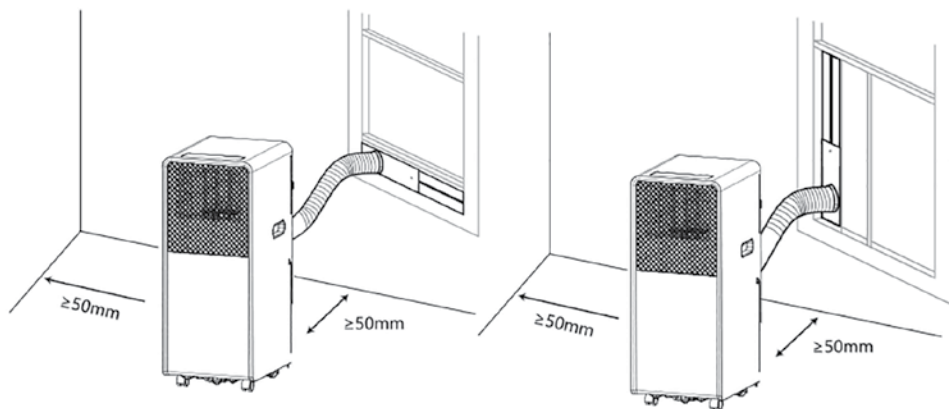


NOTE: This unit has a self-evaporative system which removes excess condensation by means of evaporating water collected in the tank. Therefore, saving you the hassle of having to use a drip tray or drainage hose. Please make sure the rubber cap is locked into position to avoid any leakage.

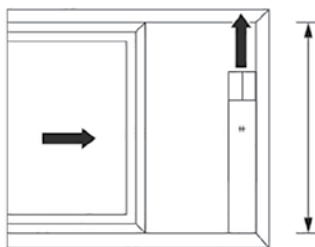
NOTE: In high humidity areas, there may be excess water condensation produced that cannot be removed or evaporated. In this instance, the unit will need to be drained. View the 'Water Drainage' section for details. The unit will automatically switch OFF when the internal water tank is full.

WINDOW KIT INSTALLATION

The window slider kit has been designed to fit most standard vertical and horizontal window applications; however, it may be necessary for you to modify some aspects of the installation procedures for certain types of windows. The window slider kit can be fastened with screws (not supplied) if required.



Window width
min: 67.5 cm
max: 125 cm



Window height
min: 67.5 cm
max: 125 cm

OPERATION INSTRUCTIONS

POWER BUTTON

Press the 'POWER ON/OFF' button to turn the unit ON or OFF.

FUNCTION

Press the MODE button to select between 'COOL', 'DEHU', or 'FAN' modes.

COOLING MODE

1. The exhaust hose needs to be installed for this mode.
2. To set this mode, press the 'MODE' button until the 'COOL' indicator light illuminates on the control panel.
3. Set the target temperature between 16-31°C by pressing the increase (+) or decrease (-) buttons until the desired temperature is displayed on the LED display.
4. Press the 'FAN SPEED' button to select the desired fan speed.

TIP: The most suitable temperature setting for a room during summer is 24°C.

DEHUMIDIFYING MODE

1. The exhaust hose needs to be connected. Remove the rubber cap from the drainage hole to connect the drain hose (not supplied).
2. To set this mode, press the 'MODE' button until the 'DEHU' indicator light illuminates on the control panel.
3. The temperature will be automatically set to 2°C below the current room temperature.
4. The fan speed will be automatically set to 'LOW'.

NOTE: Keep windows and doors closed for the best dehumidifying effect.

FAN SPEED

1. The exhaust hose needs to be removed for this mode.
2. To set this mode, press the 'MODE' button until the 'FAN' indicator light illuminates on the control panel.
3. Press the 'FAN SPEED' to cycle between 'LOW' or 'HIGH' fan speeds.
4. The current fan speed setting will illuminate on the control panel.

TEMP+ / TEMP-

Press the 'TEMP+' button to increase the set temperature or press the 'TEMP-' button to decrease the set temperature. The temperature can be set between 16-31°C.

NOTE: The time taken to reach the set temperature will depend on the environment and the size of the space in which the unit is operating in. For example, if the ambient temperature is too hot or the room is too large, the rate at which the temperature descends will be slow as the cooling may be less effective.

SETTING THE TIMER

A timer can be set to automatically turn the appliance ON or automatically turn it OFF. To set the unit to automatically turn ON, follow the below instructions:

1. While the unit is OFF, press the 'TIMER' button and select the desired time. The timer can be set in 1 hour increments up to 24 hours. The set time will be displayed on the control panel.
2. Press the 'TIMER' button again to confirm. The 'TIMER' indicator light will illuminate on the control panel.
3. To deactivate the timer function, press the 'TIMER' button until the indicator light turns off.

To set the unit to automatically turn OFF, follow the below instructions:

1. While the unit is ON, press the 'TIMER' button and set the desired time (between 0-24 hours) for the unit to remain ON, before automatically turning OFF. The set time will be displayed on the control panel.
2. Press the 'TIMER' button again to confirm. The 'TIMER' indicator light will illuminate on the control panel.
3. To deactivate the timer function, press the 'TIMER' button until the indicator light turns off. The timer can be changed by pressing the 'UP' and 'DOWN' buttons.

SLEEP MODE

1. The 'SLEEP' mode maintains the optimum room temperature without excessive fluctuations in either temperature or humidity and with quieter operation.
2. Press the 'SLEEP' button to select the sleep comfort mode. When the unit is in 'COOLING' mode and 'SLEEP' mode is selected, the unit will increase the set temperature 1°C each hour to a maximum of 2°C over two hours. These temperatures will be maintained for the remainder of the time set to help maximize sleep comfort.

FEATURE COMPATIBILITY CHART

Mode	Speed Adjustment	Temp Adjustment	Sleep Function	Timer Function
Fan	✓	✗	✗	✓
Cooling	✓	✓	✓	✓
Dehumidifier	✗	✗	✗	✓

PAIRING YOUR DEVICE WITH GLEN DIMPLEX CONNECT

1. Download the app

For iPhone: Open the App Store, search for “Glen Dimplex Connect” and tap Download.

For Android: Open the Google Play Store, search for “Glen Dimplex Connect” and tap Install.

2. Create an account

Once the app is installed, open it and sign up for a new account using your email or phone number, or log in if you already have an account.

3. Prepare your portable air conditioner for pairing

- Plug in the portable air conditioner to enter standby mode.
- The Wi-Fi indicator will start flashing quickly.

4. Add your portable air conditioner

- On the app’s home screen, tap ‘Add Device’.
- When ‘ECOIQ Portable AC and Dehumidifier’ appears in the Discovering Devices list, select ‘Add’ to begin pairing.

5. Connect to Wi-Fi

- The app will prompt you to connect the portable air conditioner to your Wi-Fi network. Ensure your phone is connected to the same 2.4GHz Wi-Fi network and Bluetooth is enabled.
- Enter your Wi-Fi credentials, tap ‘Next’ and wait for the app to confirm the connection.
- Once connected, the app will display a “Device added successfully” notification, and the Wi-Fi icon will stop flashing and remain steadily lit.
- Tap “Done” to begin using your portable air conditioner.

6. Control your portable air conditioner

Once connected, you can control and adjust your portable air conditioner’s settings directly from the app, including turning it on/off, adjusting the temperature, and more.

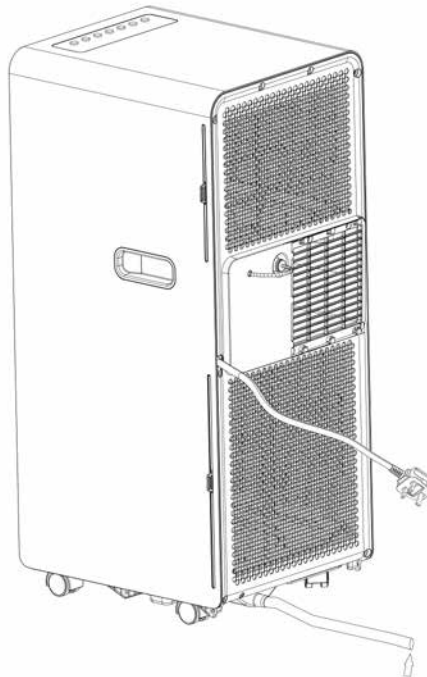
Note: The portable air conditioner can only be paired with one smartphone at a time and cannot be controlled from multiple devices.

WATER DRAINAGE

When there is excess water condensation inside the unit, the unit will stop running and the “Water Full indicator” light will illuminate. This indicates that the water needs to be drained using the following procedure:

MANUAL DRAINAGE

1. Switch off and unplug the unit.
2. Move the unit to a suitable location to drain the water. Consider placing a tray or suitable container under the outlet to catch any water.
3. Remove the drain plug from the drainage hole at the bottom of the unit. (Refer to the “Product Parts” section.)
4. Slightly tilt the unit to the rear and drain the water out.
5. Replace the drain plug before next use.



Water Pipe A

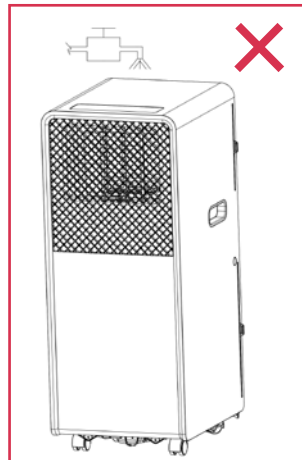
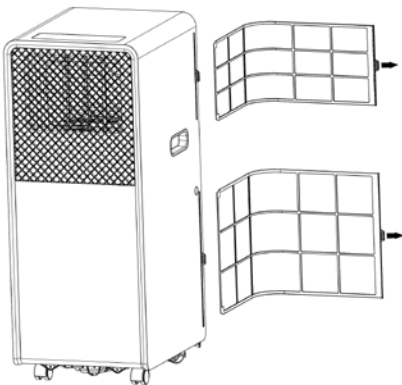
CLEANING

SAFETY PRECAUTIONS

- Always unplug the unit before cleaning or servicing.
- **DO NOT** use flammable liquids or chemicals to clean the unit.
- **DO NOT** wash the unit under running water. Doing so causes electrical danger.
- **DO NOT** operate the machine if the power supply was damaged during cleaning. A damaged power cord must be replaced with a new cord from the manufacturer.

AIR FILTERS

- **CAUTION:** Never operate the unit without a filter in place.
- Be sure to clean the air filter every week of operation for optimal performance.
- The water collection tray should be drained immediately after “E2” error occurs, and before storage to prevent mould.
- In households with animals, you will have to periodically wipe down the grill to prevent blocked airflow due to animal hair.
- Following the below diagram, remove the filters from the back of the unit.
- Use a vacuum cleaner to remove dust from the filter. If further cleaning is required, the filter can be washed in lukewarm water (never hotter than 40 degrees). Ensure it is left to dry completely before reinstalling.



OUTSIDE CABINET

1. Remove any dust build up with a soft brush.
2. Wipe the surface of the unit with a soft damp cloth. Mild detergent can be used for any stubborn marks.

Do not use abrasive sponges, scouring pads, or a stiff brush to clean the unit.

IMPORTANT: The control panel and other parts must not come into contact with water or any other liquids.

MAINTENANCE

STORAGE

- If not using the unit for an extended period of time, after cleaning please:
- Turn the unit OFF, unplug and take care of the mains lead and plug.
- Drain any water from the unit according to the instructions in 'Water Drainage' section.
- Run the appliance on FAN MODE for 12 hours in a warm room to dry out and prevent mould.
- Clean the air filter as described on the previous page.
- Remove the batteries from the remote control.
- Cover the unit and store it upright in a location where it will not receive direct sunlight. **Note:** Prolonged exposure to direct sunlight will discolour the enclosure.

TROUBLESHOOTING

ERROR CODES

E0 Indicates the room temperature sensor has failed.

E1 Indicates the condenser temperature sensor has failed

E2 Indicates the internal water container is full. Refer to the 'Water Drainage' section.

E3 Evaporator temperature sensor has failed.

If the product is not functioning correctly, please consult the troubleshooting guide below. If the issue persists or is not listed, kindly contact the Customer Service Centre for further assistance.

Problem	Possible Cause	Solution
Unit does not start when pressing on/off button.	Water full indicator blinks and water tray is full.	Empty the water out of the water tray.
	Room temperature is lower than the set temperature.	Reset the temperature.
The room isn't cool enough.	The doors and windows are not closed.	Make sure all the windows and doors are closed.
	There are heat sources inside the room.	Remove the heat sources if possible.
	Exhaust air hose is not connected or blocked.	Connect or clean the exhaust hose.
	Temperature setting is too high.	Reset the temperature.
	Air inlet is blocked.	Clean the air inlet.
The unit is noisy.	The ground is not level.	Place the unit on a flat, level ground if possible.
	The sound comes from the flowing of the refrigerant inside the air conditioner.	This sound is normal during operation.
Wi-Fi Connection fails.	Router doesn't support 2.4GHz band.	Check router settings or contact your ISP.
	Phone automatically connects to 5GHz band.	Manually switch phone to 2.4GHz.
Weak signal.	Unit is too far away from the router.	Move the unit closer to the router or use a Wi-Fi extender.

ADDITIONAL INFORMATION

Model identifier(s)			DXPAC002
Description	Symbol	Value	Unit
Rated capacity for cooling	<i>P</i> rated for cooling	3.500	kW
Rated capacity for heating	<i>P</i> rated for heating	N/A	kW
Rated power input for cooling	<i>PEER</i>	1.346	kW
Rated power input for heating	<i>PCOP</i>	N/A	kW
Rated Energy efficiency ratio	<i>EERd</i>	2.6	—
Rated Coefficient of performance	<i>COPd</i>	N/A	—
Power consumption in thermostat-off mode	<i>PTO</i>	N/A	W
Power consumption in standby mode	<i>PSB</i>	2.0	W
Electricity consumption of single / double duct appliances	<i>DD: QDD</i>	N/A	DD: kWh/a
	<i>SD: QSD</i>	1.346	SD: kWh/h
Sound power level	<i>LWA</i>	65	dB(A)
Global warming potential	<i>GWP</i>	0.02	kgCO ₂ eq.

Contact details for obtaining more information:

UK: Glen Dimplex Heating and Ventilation, Millbrook House, Southampton, Hampshire, England, SO30 2DF

ROI: Glen Dimplex Ireland UC, Airport Road, Cloghran, Co. Dublin, K67 DT89

RECYCLING



For electrical products sold within the European Community. At the end of the electrical product's useful life, it should not be disposed of with household waste. Please recycle where facilities exist. Check with your Local Authority or retailer for recycling advice in your country.

If you don't intend to keep the packaging of this product for later use or storage, please dispose of it in an environmentally friendly way, please dispose of it in your recycling bin or nearest recycling facility, thank you.

GUARANTEE



To view the full Guarantee Terms & Conditions scan the QR code or go to <https://www.gdhv.co.uk/guarantee-terms-and-conditions>

WHAT DOES A DIMPLEX GUARANTEE COVER?

Dimplex products deliver reliable service for normal, household use in domestic settings. All Dimplex products are individually tested before leaving the factory.

If you are a consumer and you experience a problem with your Dimplex product, which is found to be defective due to faulty materials or workmanship within the Guarantee Period, this Dimplex Guarantee will cover repair or - at the discretion of Dimplex - replacement with a functionally equivalent Dimplex product.

Your product is under Guarantee for 1-year from the date of purchase or the date of delivery of the product, if later. The 1-year Guarantee is extended for an additional 1-year when you register the product with Dimplex, within 28 days of purchase. If you do not register the product with Dimplex within 28 days, your product will remain warranted for 1-year only.

To validate your extended Guarantee, register with us online at: <http://register.dimplex.co.uk>.

NOTE: Each qualifying product needs to be registered with Dimplex individually. Please note that the extended Guarantee is only available in the UK and Ireland.

The Dimplex Guarantee is conditional upon you providing the original purchase receipt as proof of purchase. Please therefore retain your receipt as proof of purchase.

If you do experience a problem with your Dimplex product, please call the Helpline on **+44 [0]344 879 3588** or visit **<https://www.dimplex.co.uk/support>**.

For ROI, please email **serviceireland@glendimplex.com** or call **+353(0)1 842 4833**.

We will need details of your Dimplex product and a description of the fault which has occurred. Once we receive your information and proof of purchase, we will contact you to make the necessary arrangements. If your Dimplex product is not covered by this Dimplex Guarantee, there may be a charge to repair your product. However, we will contact you for agreement to any charges before any chargeable service is carried out.

WHAT IS NOT COVERED BY A DIMPLEX GUARANTEE?

The Dimplex Guarantee does not cover any of the following:

Any fault or damage to your Dimplex product due to faulty materials or workmanship occurring outside the Guarantee Period. Normal wear and tear including parts that might wear out over time or consumables, such as filters, batteries, etc.

Any fault or damage occurring to any pre-owned Dimplex product or to any other equipment or property. Accidental damage to your Dimplex product or damage to your Dimplex product from external sources (for example, transit, weather, electrical outages or power surges).

Fault or damage to your Dimplex product which is:

- Not due to faulty materials or workmanship or which is due to circumstances outside Dimplex's control.
- Caused by use of your Dimplex product for anything other than normal domestic household purposes in the country where it was purchased.
- Caused by any misuse, abuse or negligent use of the Dimplex product, including but not limited to any failure to use it in accordance with the Operating Instructions supplied with the product.

- Caused by any failure to assemble, install clean and maintain your Dimplex product in accordance with the Operating Instructions supplied with the product unless this was carried out by Dimplex or its authorised dealers.
- Caused by repairs or alterations to your Dimplex product not carried out by Dimplex service personnel or its authorised dealer(s).
- Caused by use of any consumables or spare parts for your Dimplex product which are not Dimplex - specified.

TERMS AND CONDITIONS

The Dimplex Guarantee is valid for 1 calendar year, plus 1 if registered, from the date of purchase of your Dimplex product from a recognised retailer in the country of purchase and use, or the date of delivery of the product if later, always provided the original receipt has been retained and is produced as proof of purchase.

You must provide to Dimplex or its authorised agents on request the original receipt as proof of purchase and - if required by Dimplex - proof of delivery. If you are unable to provide this documentation, you will be required to pay for any repair work required.

Any repair work under the Dimplex Guarantee will be carried out by Dimplex or its authorised dealer(s) and any parts that are replaced will become the property of Dimplex. Any repairs or replacement performed under the Dimplex Guarantee will not extend the Guarantee Period.

The Dimplex Guarantee does not entitle you to recovery of any indirect or consequential loss or damage including but not limited to loss or damage to any other property.

The Dimplex Guarantee is in addition to your statutory rights as a consumer and your statutory rights are not affected by this Dimplex Guarantee.

CUSTOMER CARE CENTRE

If you are having problems with your appliance or have any questions about what the Dimplex Guarantee covers or how to claim under the Dimplex Guarantee, please contact us:

United Kingdom

Telephone: **+44 344 879 3588**

Visit: **www.dimplex.co.uk**

Glen Dimplex Heating and Ventilation,
Millbrook House,
Southampton,
Hampshire,
England,
SO30 2DF

Republic of Ireland

Telephone: **+353 1 842 4833**

Email: **serviceireland@glendimplex.com**

Glen Dimplex Ireland UC,
Airport Road,
Cloghran,
Co. Dublin
K67 DT89



© Glen Dimplex. All rights reserved. Material contained in this publication may not be reproduced in whole or in part, without prior permission in writing of Glen Dimplex.

Printed in China.